

Name _____

Score _____

Date _____

Class _____

2. FIND A "CRUTCH"

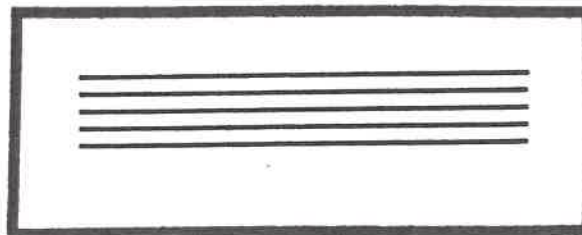
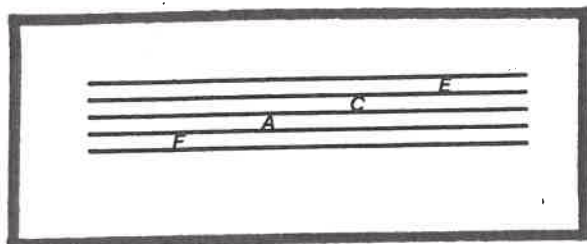
(I-2)

Music language uses the first seven letters of the alphabet: A B C D E F G. After G, the letter names start again with A: A B C D E F G A B C, and so on.

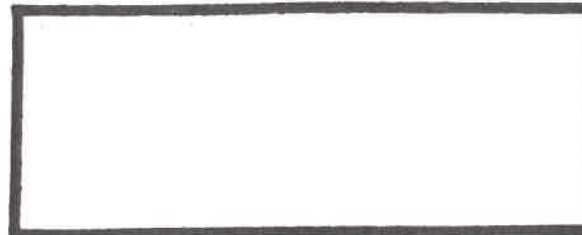
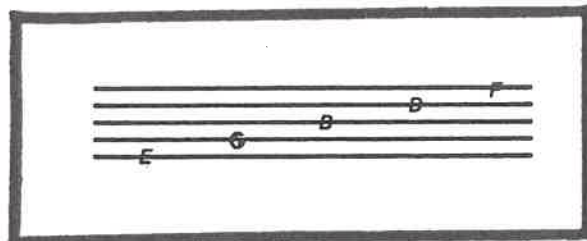
The lines and spaces of the staff have letter names. Learn more about the letter names by reading and completing the work below. You will find a "crutch" to help you remember the letter names of the lines and spaces.



For each pair of boxes, fill in the second box so it matches the first one.



The letter names of the spaces are F A C E.



The letter names of the lines are E G B D F.

To help you remember the names of the spaces, think of what F A C E spells—of course, face. To remember the names of the lines E G B D F, use them as the beginning letters of words in a sentence. The following two sentences are examples. Underline the beginning letter of each word.

a. Every good boy deserves fudge.

b. Empty garbage before Dad flips.

Write two sentences of your own to help you remember the names of the lines. Check your sentences by underlining the first letter of each word. Do they spell E G B D F?

1.

2.

3. The letter names of the spaces spell the word _____

4. The letter names of the lines are _____

Name _____
Date _____

Score _____
Class _____

3. DRAW THE NOTES

(1-3)

Music is written with a STAFF and NOTES. The notes stand for musical sounds or tones. There are two steps to making a note. The top part is drawn first and then the bottom part. Trace over the lines to make the note below.



Draw two lines of notes using the two steps in the example above:

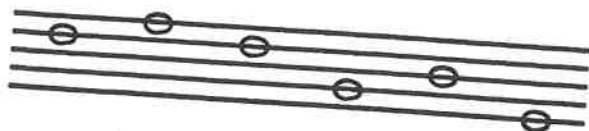
There are both LINE NOTES and SPACE NOTES.

When a line goes through a note, it is called a LINE NOTE.

Draw a Line Note.



These are examples of Line Notes on the staff.



Draw three Line Notes on the staff.

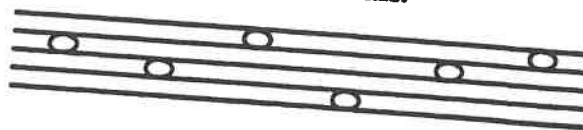


A note without a line through it is called a SPACE NOTE.

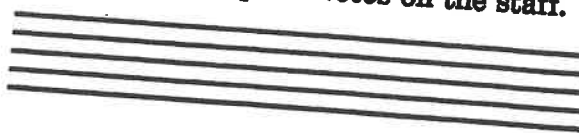
Draw a Space Note.



These are examples of Space Notes on the staff.



Draw three Space Notes on the staff.



On the staff below, mark all Line Notes with an "X" and circle all Space Notes.



Name _____

Score _____

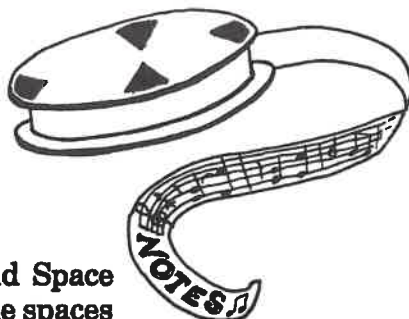
Date _____

Class _____

4. NAME THE NOTES

(1-4)

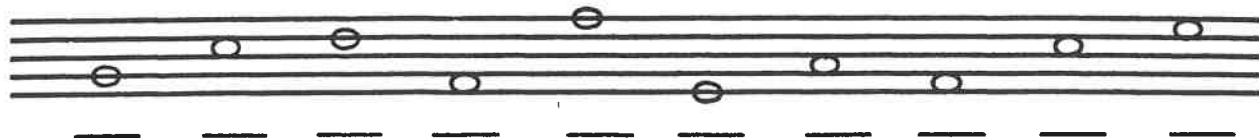
1. a. Draw a Line Note.



b. Draw a Space Note.



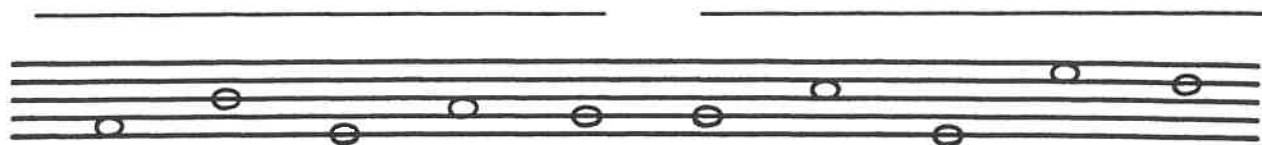
2. There are both Line Notes and Space Notes on the staff below. On the spaces under the staff, write an "L" for each Line Note, and an "S" for each Space Note.



3. You have learned that the lines and spaces of the staff have letter names. Notes that are found on the lines and spaces take on their letter names. For example, a note on the "F" space is called the "F" NOTE, a note on the "G" line is called the "G" NOTE, and so on.

a. Find the Line Notes on the staff.
Write their letter names below in the order they appear. (The answer spells a word.)

b. Find the Space Notes on the staff.
Write their letter names below in the order they appear. (The answer spells a word.)



4. On the staff below, draw the proper notes above the letter names.

(NOTE = $\wedge + \cup = \bigcirc$)



G E F A D B C A G B

Name _____

Date _____

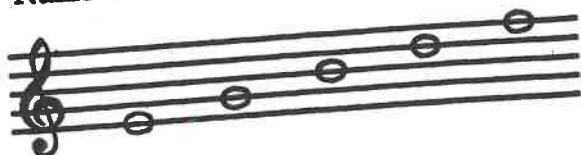
Score _____

Class _____

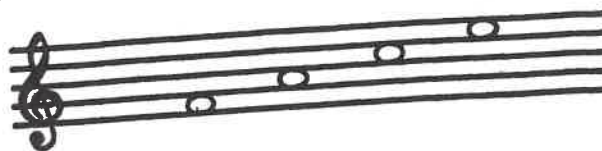
(1-7)

7. NOTE REVIEW

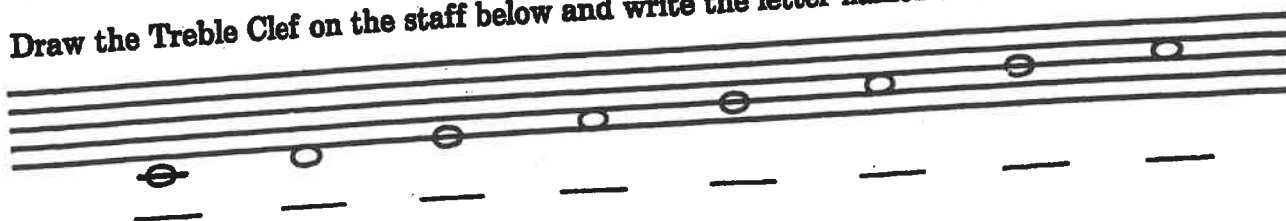
1. Name the Line Notes.



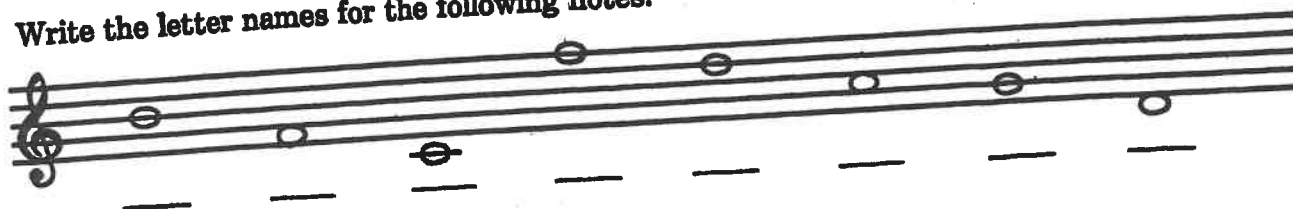
2. Name the Space Notes.



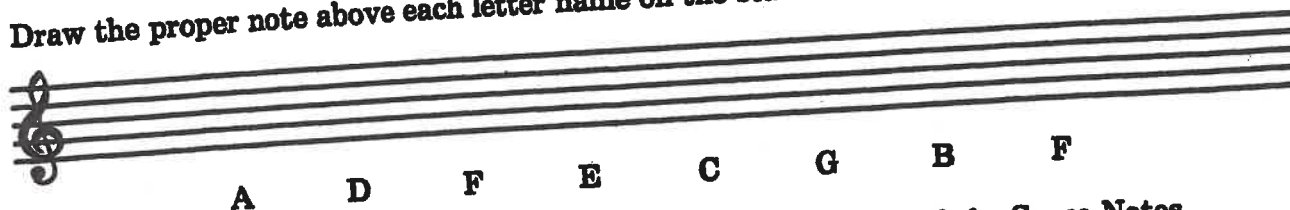
3. Draw the Treble Clef on the staff below and write the letter names of the notes.



4. Write the letter names for the following notes.



5. Draw the proper note above each letter name on the staff below.



6. On the above staff, mark the Line Notes with an "X" and circle all the Space Notes.

Name _____
Date _____

Score _____
Class _____

1. THE NOTE SPELLDOWN

Write the letter names for the following notes.*

(II-1)

1. 2. 3. 4. 5. 6.

* Check your answers by reading the note names from the top to the bottom. Each group of letters spells a word.
Write the words here:

1. _____

2. _____

3. _____

4. _____

5. _____

6. _____